

Maps & Spatial Information



OVERVIEW

E&P projects are typically associated with spatial reference information such as: Project extents, basins, fields, wells & assets. PARS enables automatic capture of the spatial information relating to the project at the time of archive.

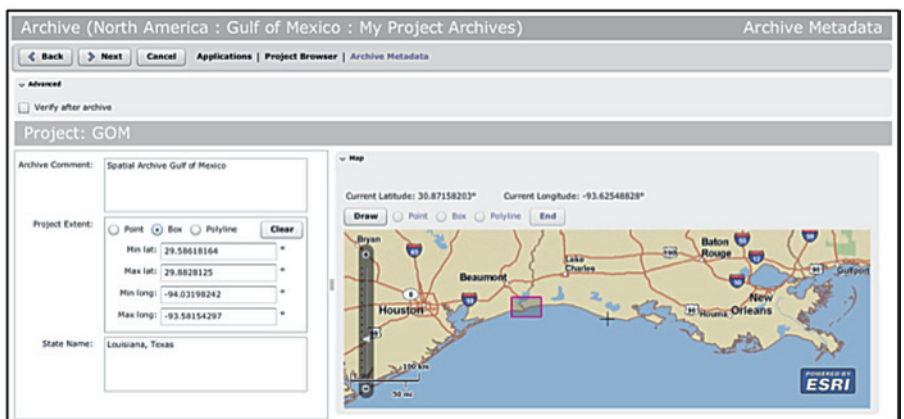
Integrating to ArcGIS from ESRI, PARS contains a map interface which can leverage corporate layer information. Information can be automatically extracted from E&P applications, ESRI layers or manually entered by the archiver. Capturing the spatial information of a project increases its referential integrity and long term value.

KEY BENEFITS

- Easy to use interactive map with editing tools.
- Supports ArcGIS from ESRI server versions 9, 10 and later.
- Integrate to your in-house ArcGIS server and utilise corporate specific layers.
- Configure multiple layers to be displayed on the map i.e. basins, fields & areas.
- Extract layer information and store as archive metadata i.e. basin names.
- Automatically Extract spatial information from supported applications.
- Capture latitude & longitude co-ordinates using: Box, Point & Polyline.

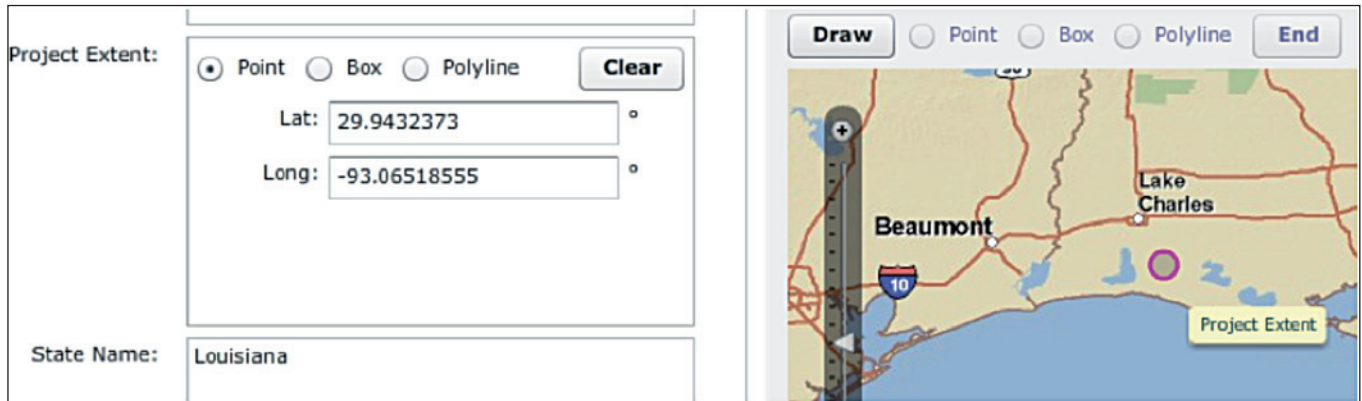
CAPTURING SPATIAL INFORMATION

A map is available on the metadata entry page to capture spatial co-ordinates of a project. This information can be automatically extracted from the associated application and then edited by the archiver if required. Alternatively the project extent can be drawn onto the map using the map editing tools.



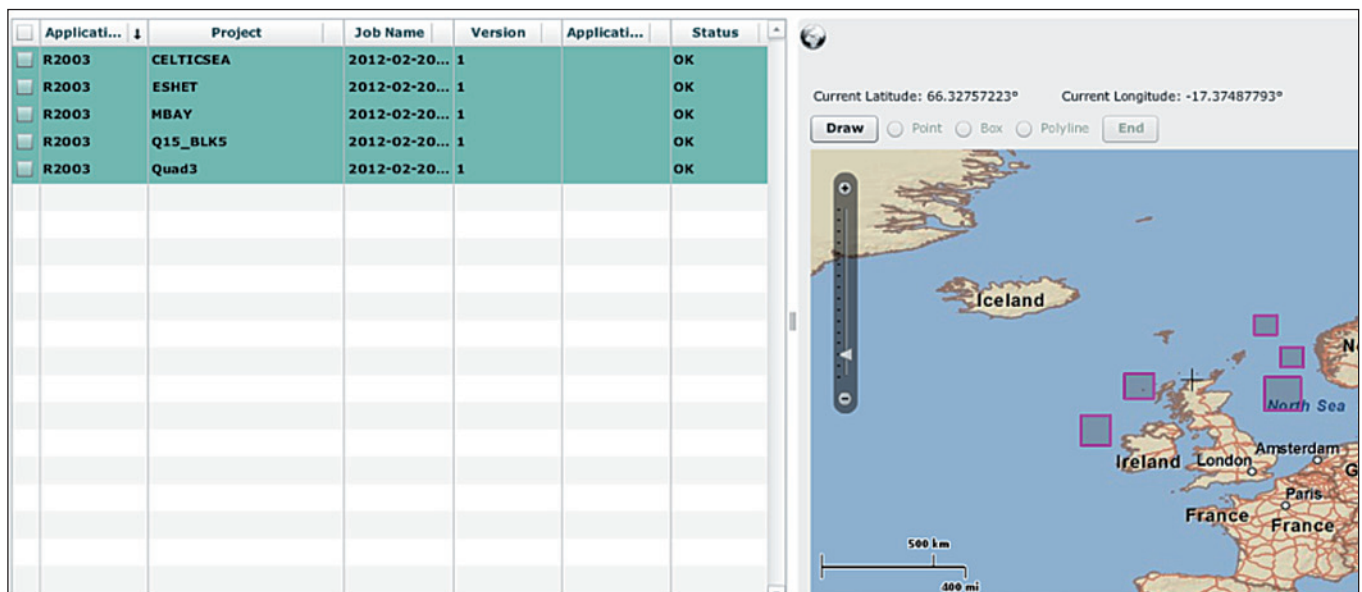
CORPORATE LAYER INFORMATION

Information stored within corporate ArcGIS layers such as wells, fields, basin names or business units can be dynamically captured based on the location of the project extent. The example below shows the state name Louisiana being captured based on the point location selected on the map:



GEO-LOCATION OF ARCHIVES

The project extents of all selected archives are displayed on a map within the restore wizard. This provides a visual aid to the restorer when choosing the correct project or version of a project to restore. All spatial information is searchable from the PARS web interface.



UNITED KINGDOM OFFICES:

Interica Ltd., 1st Floor, Tribune House, Bell Lane,
Uckfield, East Sussex TN22 1QL,

Tel: +44 (0) 1825 745100 Fax: +44 (0) 1825 767031 www.interica.com

Interica Ltd., 5 Swan Business Park, Sandpit Road,
Dartford, Kent DA1 5ED

Tel: +44 (0) 1322 285921 Fax: +44 (0) 1322 285923 www.interica.com

UNITED STATES OFFICE:

Interica Inc., 16000 Barkers Point Lane, Suite 202, Houston,
Texas 77079, United States of America

Tel: 1 281 497 0440 Fax: 1 281 497 0402 www.interica.com



INTERICA

Innovate. Access. Discover.